

EMF100

INLINE LED INDICATOR



OVERVIEW

The EMF100 Electromagnetic flow meter comprises of a magnetic flow tube and an electronic flow converter. Specially designed flow coils generate a magnetic field in the flow tube. As the conductive fluid flows through this field, a voltage proportional to the velocity of the fluid is generated in the electrodes. This voltage is received by the flow converter and displayed as flow value on the LCD.

Various communication options allows you to monitor, store and analyze your consumption.

FEATURES

- Rate Indicator / Totalizer functions
- Batch function
- Pulsed DC excitation
- Linear & Accurate
- Computerized data logging
- Easy maintenance

APPLICATIONS

- Water treatment
- Pump testing
- Paper & Pulp
- Effluent Treatment Plants
- Waste Water & Sewerage
- Food & Dairy Processing
- Chemical Process Plants

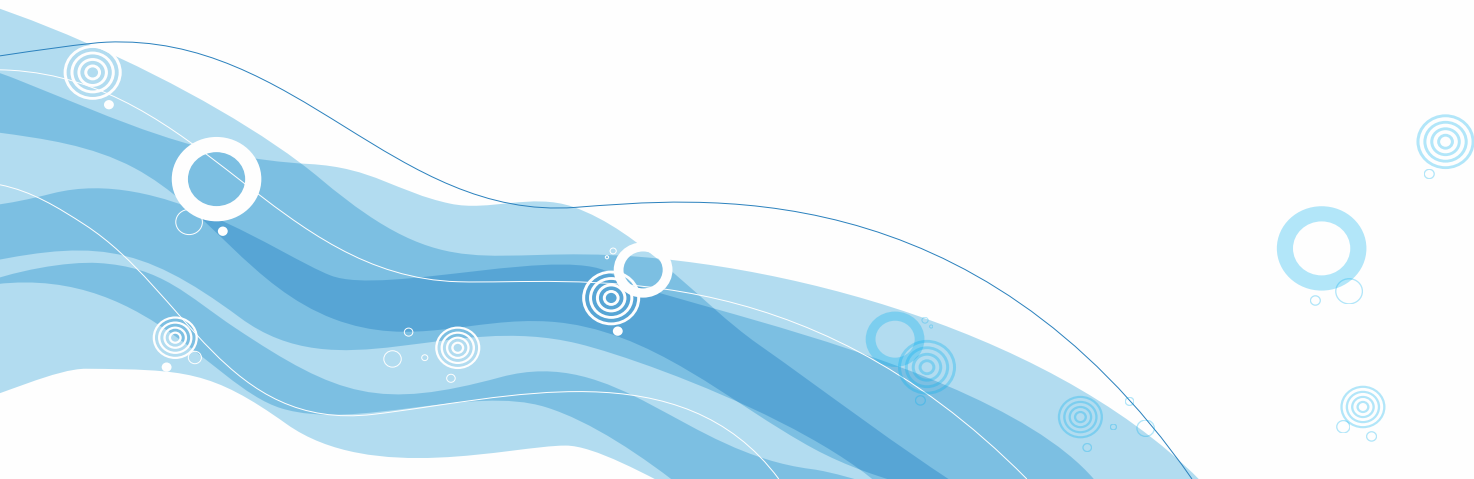


SPECIFICATIONS

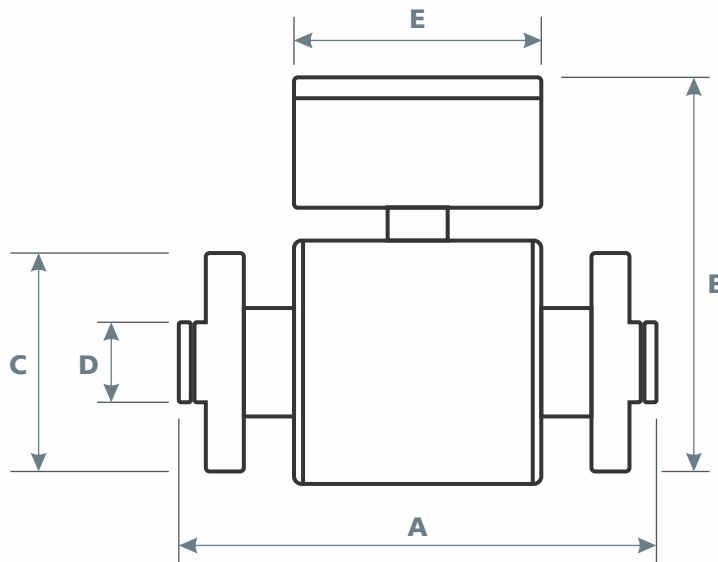
Accuracy	0.5%
Operating Range	0.3 – 10m/s
Flange Connection	ANSI B 16.5
Lining	PTFE
Min Conductivity	10 uS/cm
Flange Material	Mild Steel
Coil Housing	Mild Steel
Electrodes	SS316L / Hastelloy-c
Measuring Tube	SS304
Meter Enclosure	Cast Alumimium
Empty Pipe Detection	Yes
Outputs	Isolated 4-20mA, pulse
Communication	RS-232
Power Supply	220V AC 50 Hz

SIZING CHART

Pipe Size		Max. Flow	Nominal Flow	Min. Flow	Creep (Cut-Off)
		10 m/s	5 m/s	0.3 m/s	0.04 m/s
1	25	5.09	2.50	0.15	0.016
1 ¼	32	8.00	4.0	0.25	0.03
1 ½	40	12.00	6.0	0.41	0.05
2	50	19.80	10.0	0.58	0.08
2 ½	65	33.18	16.0	1.00	0.13
3	80	43.61	22.0	1.50	0.20
4	100	75.10	38.0	2.41	0.33
6	150	170.43	85.0	5.50	0.69
8	200	295.11	147.0	9.70	1.38
10	250	465.18	232.0	15.20	2.08
12	300	667.18	333.0	22.0	2.77
14	350	798.18	399.0	23.95	3.20
16	400	1166	583	38.0	5.55
18	450	1500	750	50.0	7.0



DIMENSIONS



Line Size		Flow Tube Length	Flow Tube Height	Flange Diameter	Linear Face Diameter	Bolt P. Circle Diameter	Bolt Hole Diameter	Size / No. of Bolts	
Inch	mm	A	B	C	D			mm	
1/2	15	200	170	89	35	60.3	16	12	4
1	25	200	190	108	51	79.4	16	12	4
1 1/2	40	200	208	127	73	98.4	16	12	4
2	50	200	233	152	92	120.6	19	16	4
2 1/2	65	200	260	177	105	139.7	19	16	4
3	80	200	272	191	127	152.4	19	16	4
4	100	250	300	218	157	177.8	19	16	8
6	150	300	360	279	216	241.3	22	19	8
8	200	350	418	342	270	298.4	22	19	8
10	250	381	482	406	324	362.0	25	19	12
12	300	457	558	482	381	431.8	25	19	12
14	350	533	610	534	413	476.2	29	19	12

Thickness of lining + Grounding Rings not included



Ph: +91 44 2482 7879
 sales@gsv-microtech.com
 www.gsv-microtech.com
 3/531/A Kundrathur Road, Madanandapuram,
 Porur, Chennai - 600 116. India.



Scan to download
EMF100 datasheet