

# BAYLAN

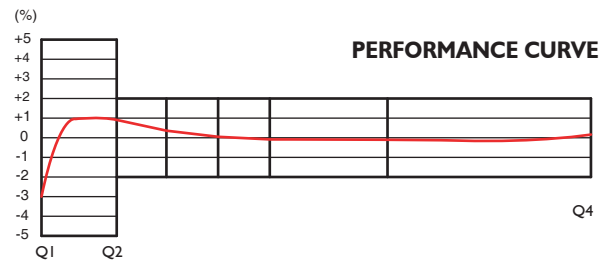
## WATER METERS



### WOLTMANN Type Water Meters

#### GENERAL

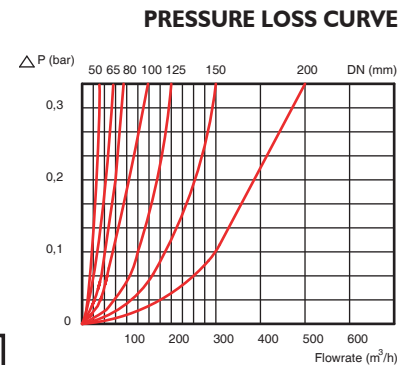
- MID Certificated
- Woltmann type design for industrial applications
- IP68 protected dry type mechanism
- Low head loss • Good sensitivity in initial starting
- Body internally/externally e/p powder painted
- Optical reading available • 3 years of warranty
- Special, thick glass with resistance to impacts
- Almost no maintenance
- Service and spare parts available for 10 years



PERFORMANCE CURVE

#### MAIN TECHNICAL DATA

At low flows :  $\pm 5\%$  (error) between minimum flow rate ( $Q_1$ ) and transitional flow rate ( $Q_2$ )  
 At high flows :  $\pm 2\%$  (error) between transitional flow rate ( $Q_2$ ) and overload flow rate ( $Q_4$ )  
 Max. Working Temperature:  $50^\circ\text{C}$   
 Max. Working Pressure : 16 bar



PRESSURE LOSS CURVE

#### DIMENSIOIS AND WEIGHTS

METER SIZE DIA (mm)	L LENGTH	B WIDTH	H HEIGHT	CONNECTING FLANGE			WEIGHT (kg)
				D2 (mm) FLANGE DIA	D1 (mm) BOLT CIRCLE DIA.	CONNECTION BOLT (PCS-DIA)	
65	200	185	235	185	145	2-M16 + 2-M14	13
80	225	200	240	200	160	8 - M16	14
100	250	220	245	220	180	8 - M16	15
125	250	250	260	250	210	8 - M16	20
150	300	285	310	285	240	8 - M20	38
200	350	340	385	340	295	8 - M20	51
50	200	165	215	165	125	4 - M16	12

WOLTMAN  
W-0, W-1, W-2  
W-3, W-4, W-5

METER SIZE DIA (mm)	TYPE	Q <sub>3</sub> / Q <sub>1</sub>	Q <sub>4</sub> MAX FLOW	Q <sub>3</sub> NOMINAL FLOW	Q <sub>2</sub> TRANSITIONAL FLOW	Q <sub>1</sub> MIN. FLOW	SMALLEST READING RESOLUTION	MAX. REGISTRATION CAPACITY
			m <sup>3</sup> /h			m <sup>3</sup>		
65	W 0	63	50	40	1,015	0,634	0,001	999999
80	W 1	63	78,75	63	1,6	1	0,001	999999
100	W 2	63	125	100	2,540	1,587	0,001	999999
125	W 3	50	200	160	5,12	3,2	0,001	999999
150	W 4	63	312,5	250	6,349	3,968	0,01	9999999
200	W 5	63	500	400	10,158	6,349	0,01	9999999
50	W 6	50	31,25	25	0,8	0,5	0,001	999999